

Sierra Leone

1980, 23. Februar
75 Jahre Internationaler Rotary-Club
Gründer Paul P. Harris und Präsident Stevens



1980, 6. Mai
Internationale Briefmarkenausst. London 1980
Postschiffe



1980, 1. Juli
17. Afrikanische Gipfelkonferenz
Freetown



Sierra Leone

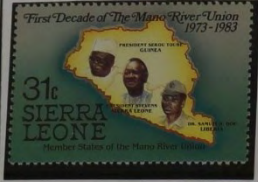
1984, 8. Februar
10 Jahre Mano-River-Union
Studenten



737

728

02.79



729

740

1984, 15. März
Olympische Sommerspiele, Los Angeles

747-43

744/82.20

1984, 14. Mai
15. Jahrest. der ersten Mondlandung eines Menschen



745

746

749/01.27



747

748

Sierra Leone

1986, 25. August
Blumen



901



902



903



904



905



906



907



908



Clitoria ternatea

909/132.48



Plumbago auriculata

910/132.49

1986, 26. August
25 Jahre amerikanisches Friedenskorps



911

Sierra Leone

1987, 15. Juni
Segelregatta um den „America's Cup“
Segeljachten



964



965



977/82.58



966



967



968



969



970

1987, 10. August
Olympische Sommerspiele 1988 in Seoul



1007/132.67



997



998



999

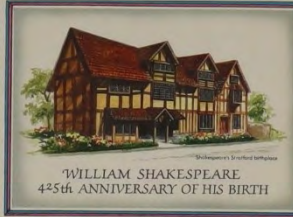
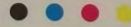


1000

Sierra Leone

1989, 30. Mai
425. Geburtstag von William Shakespeare
Englischer Dichter (1566-1616)

1B 1B 1B 1B



BDT INTERNATIONAL SECURITY PRINTING LTD

1186-93



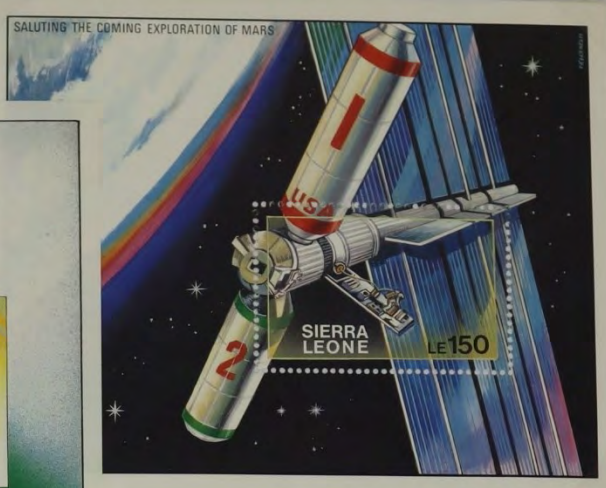
1195/Bf. 100

1990, 15. Januar
Erforschung des Mars

Sierra Leone



1392/AL 120



1393/AL 727



1356-7364

Sierra Leone

1990, 22. Oktober
Karussellfiguren



1507/BL. 735



1498



1499



1500



1507



1502



1503



1504



1505



1506



1508/BL. 736

Sierra Leone

1991, 8. April
Ostern
Gemälde von Rubens



16011 Bl. 153



16021 Bl. 154



1593



1594



1595



1596



1597



1598



1599



1600

Sierra Leone

1991, 5. August
Blumen und Schmetterlinge

127



1659/28.169



1660/20.170



1657



1652



1653



1654



1655



1656



1657



1658



1667/28.177



1662/28.172

1992, 8. Juni
Prähistorische Tiere

Sierra Leone

"PREHISTORIC ANIMALS"



1A
1A
1A
1A

1A
1A
1A
1A

●
●
●
●

●
●
●
●

BDT INTERNATIONAL
SECURITY PRINTING LTD

1806-1825



1026/Al. 195

Sierra Leone

1993, 14. Januar
Welternährungskonferenz in Rom 1992



1949



1950

1993, 14. Januar
Weltgesundheitsorganisation (WHO)



1951

1993, 14. Januar
Konferenz der Vereinten Nationen in Rio de Janeiro
über Umwelt und Entwicklung (UNCED)



1952



1953

1993, 14. Januar
75 Jahre Lyons International



1954

1993, 14. Januar
500. Jahrestag der Entdeckung Amerikas (1992)



1955



1957/BL, 293



1956

Sierra Leone

THE COLOURFUL RAILROADS OF THE WORLD



SIERRA LEONE Le 250

EUROPE: THE NEW EUROSTAR EXPRESS



SIERRA LEONE Le 250

ITALY: E.T.R. 461 PENDELINO FOUR-CAR TILTING TRAIN



SIERRA LEONE Le 250

BRITAIN: HS1 351 INTER-CITY HIGH SPEED TRAIN



SIERRA LEONE Le 250

SPAIN: VIRGIN B-B CLASS HIGH-SPEED DIESEL-HYDRAULIC EXPRESS



SIERRA LEONE Le 250

FRANCE: FRENCH NATIONAL RAILWAYS TGV



SIERRA LEONE Le 250

U.S.A.: THE AMTRAK SOUTHWEST CHIEF



SIERRA LEONE Le 250

FRANCE: TGV ATLANTIQUE



SIERRA LEONE Le 250

GREECE: THE PELOPONNESE EXPRESS



SIERRA LEONE Le 250

JAPAN: SHINKANSEN HIGH-SPEED ELECTRIC PASSENGER TRAIN



SIERRA LEONE Le 250

CANADA: CANADIAN NATIONAL TURBO TRAIN



SIERRA LEONE Le 250

AUSTRALIA: XPT HIGH-SPEED DIESEL-ELECTRIC PASSENGER TRAIN



SIERRA LEONE Le 250

CHINA: SS1 CO-CO ELECTRIC LOCOMOTIVE

RAILWAYS OF THE WORLD

THE COLOURFUL RAILROADS OF THE WORLD



SIERRA LEONE Le 300

CANADA: CANADIAN NATIONAL U1F LOCOMOTIVE



SIERRA LEONE Le 300

U.S.A.: CENTRAL PACIFIC RAILWAY'S NO 119 AT PROMONTORY



SIERRA LEONE Le 300

BRITAIN: L.N.E.R. A1 CLASS STREAMLINED 4-6-0 LOCOMOTIVE



SIERRA LEONE Le 300

U.S.A.: NEW YORK CENTRAL J32 EMPIRE STATE EXPRESS



SIERRA LEONE Le 300

CANADA: CANADIAN NATIONAL 404



SIERRA LEONE Le 300

AUSTRALIA: CLASS 38 PACIFIC 40-2 EXPRESS LOCOMOTIVE



SIERRA LEONE Le 300

CANADA: CANADIAN PACIFIC 40-2 EXPRESS



SIERRA LEONE Le 300

BRITAIN: SOUTHERN RAILWAY WEST COUNTRY CLASS 40-2 LOCOMOTIVE



SIERRA LEONE Le 300

U.S.A.: NORFOLK & WESTERN CLASS J 40-4



SIERRA LEONE Le 300

CHINA: P42 CLASS 4-6-0 PACIFIC LOCOMOTIVE



SIERRA LEONE Le 300

SOVIET UNION: P-36 CLASS 40-2 EXPRESS LOCOMOTIVE



SIERRA LEONE Le 300

BRITAIN: GREAT WESTERN RAILWAY KING CLASS 40-2 LOCOMOTIVE

RAILWAYS OF THE WORLD

China Security Printing Ltd.



China Security Printing Ltd.



Sierra Leone

Wildlife of Africa



2402 - 2409

Wildlife of Africa



2470 - 2477

1996, 26. Februar
100 Jahre Kino

Sierra Leone

100 YEARS OF CINEMA



2494-2502



2572/AR. 290

Sierra Leone

1996, 17. Juni
Pilze



2565-2572



2587/82, 297

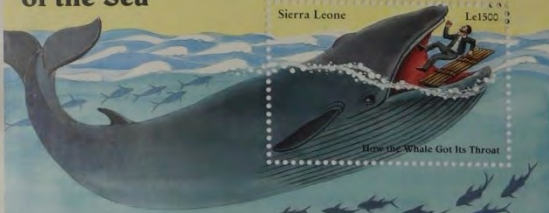


2567



2562

Fantasies of the Sea



How the Whale Got Its Throat

When a mariner and his raft were swallowed by a whale, the mariner built a grate from pieces of the raft and wedged it into the throat of the whale. This resulted in a narrowed throat, allowing the whale to swallow only the smallest fish, shrimp and krill. After building the grate, the mariner escaped from the whale.

Fantasies of the Sea

224



Killer Whale Crest

A certain killer-whale, wanting the Indians to use him as a totem crest, pulled a Timbrian fisherman into his undersea house and taught the fisherman to draw figures of the killer whale. After the killer whale brought the fisherman to the surface, the Indians started using the killer whale crest on their totems and house fronts.

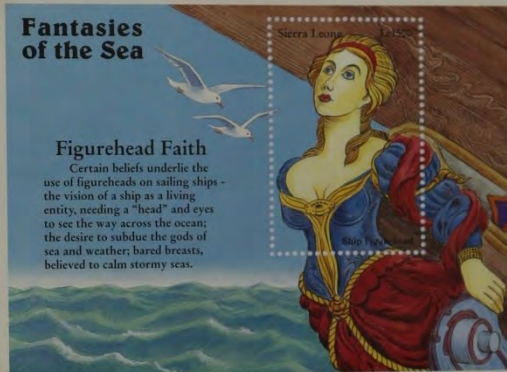
Fantasies of the Sea



Aphrodite

According to legend, Aphrodite, the goddess of love, was brought forth from the ocean foam near Cyprus. One of the twelve Olympians, this celebrated deity was also known as the queen of laughter and patroness of courtesans.

Fantasies of the Sea



Figurehead Faith

Certain beliefs underlie the use of figureheads on sailing ships - the vision of a ship as a living entity, needing a "head" and eyes to see the way across the ocean; the desire to subdue the gods of sea and weather; bared breasts, believed to calm stormy seas.

Fantasies of the Sea



Lilith

Lilith, described as a female leviathan and storm god, preyed upon men who found her charms difficult to resist. As punishment for her transgressions, her legs were chained together and she was condemned to dwell forever in the depths of the sea.

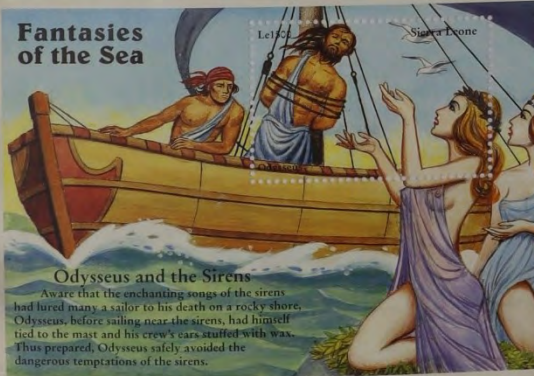
Fantasies of the Sea



The Queen of the Orkney Islands

Oh, the Queen of the Orkney Islands,
She's traveling over the sea;
She's bringing a cuttle-fish with her,
To play with my baby and me.
Oh, his head is three miles long, dear;
His tail is three miles short;
And when he goes out, he wriggles
his snout
In a way that no
cuttle-fish ought.

Fantasies of the Sea



Odysseus and the Sirens

Aware that the enchanting songs of the sirens had lured many a sailor to his death on a rocky shore, Odysseus, before sailing near the sirens, had himself tied to the mast and his crew's ears stuffed with wax. Thus prepared, Odysseus safely avoided the dangerous temptations of the sirens.

2724/Ab. 373
Die kleine Seejungfrau

Sierra Leone



2803



中英关于香港问题联合声明的签署，展现出邓小平“一国两制”的理想是解决重大国际争议及和平统一中国的前瞻性创见。

CHINA'S RESUMPTION OF SOVEREIGNTY OVER HONG KONG IS THE BEGINNING OF THE REALIZATION OF DENG'S ULTIMATE WISH - TO REUNIFY CHINA WITH A PEACEFUL SOLUTION.

2804

Sierra Leone

1997, 29. August
Hundewelpen



2892

2893

2894



2895 - 2900



2907/13L 370

Sierra Leone

1998, 12. Januar
Tod von Prinzessin Diana 1997



•IN MEMORIAM•

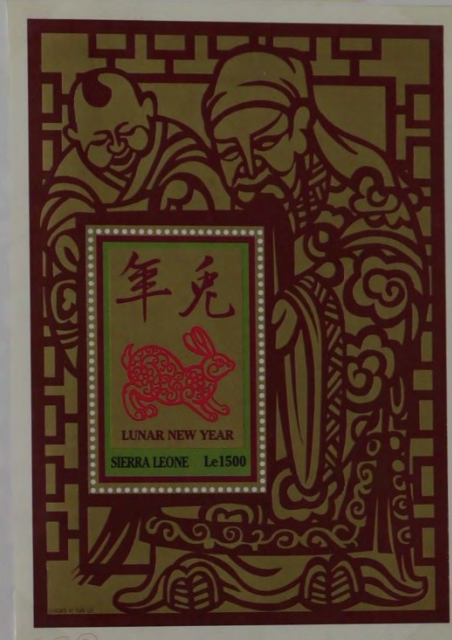
2960-2965



2978 / RL 380

Sierra Leone

1998, 24. Dezember
Chinesisches Neujahr: Jahr des Hasen



3104

3104/ASL.404



兔年

3107-03

1999, 4. August
Internationale Briefmarkenausstellung, CHINA '99
In Peking (I) : Gemälde

Sierra Leone



THE INTERPRETATION OF A POEM OF SHI YAO
FU BAOSHI (1904-1965)

SIERRA LEONE Le400



THE AUTUMN OF HO-PAO
FU BAOSHI (1904-1965)

SIERRA LEONE Le400



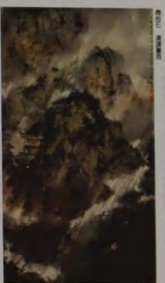
THE LANDSCAPE IN RAIN
FU BAOSHI (1904-1965)

SIERRA LEONE Le400



THE LANDSCAPE IN RAIN
FU BAOSHI (1904-1965)

SIERRA LEONE Le400



THE LANDSCAPE IN RAIN
FU BAOSHI (1904-1965)

SIERRA LEONE Le400



THE PORTRAIT OF TO-FU
FU BAOSHI (1904-1965)

SIERRA LEONE Le400



THE CLASSIC LADY
FU BAOSHI (1904-1965)

SIERRA LEONE Le400



THE PORTRAIT OF LI-PAI
FU BAOSHI (1904-1965)

SIERRA LEONE Le400



BRIDE OF THE MOUNTAIN
FU BAOSHI (1904-1965)

SIERRA LEONE Le400



THE CLASSIC LADY
FU BAOSHI (1904-1965)

SIERRA LEONE Le400

傅抱石作品选

SELECTED PAINTING OF
FU BAOSHI
(1904-1965)



中国'99世界集邮展览
China '99 World Philatelic Exhibition



第22届万国邮政联盟大会中国组织委员会秘书局
Secrétariat du Comité chinois d'organisation du 22^e Congrès UPU

傅抱石，江西新余人，现代中国画大师，著名美术理论家。早年留学日本，奠定美学理论研究之基础。擅画山水、人物，所作笔墨结构不泥古法、不落俗套，线条纵逸清奇，色彩沉丽雅致，用水、用墨、用色一气呵成，造境深邃，诗意盎然。



FOUR SEASONS - WINTER
FU BAOSHI (1904-1965)

SIERRA LEONE Le800



FOUR SEASONS - SUMMER
FU BAOSHI (1904-1965)

SIERRA LEONE Le1500

傅抱石像
己卯年九月于京



傅抱石作品选

SELECTED PAINTINGS OF
FU BAOSHI (1904-1965)
A GREAT MODERN MASTER OF
TRADITIONAL CHINESE PAINTING.



中国'99世界集邮展览
China '99 World Philatelic Exhibition

第22届万国邮政联盟大会中国组织委员会秘书局
Secrétariat du Comité chinois d'organisation du 22^e Congrès UPU

3282-3287

3282+3283
Bl. 420

Sierra Leone Le800



Sierra Leone Le800



Sierra Leone Le800



Sierra Leone Le800



Sierra Leone Le800



Sierra Leone Le800



Sierra Leone Le800



Sierra Leone Le800



Sierra Leone Le800



1 LOVE LUCY is a registered trademark of CBS Worldwide Inc. Images of Lucille Ball & Desi Arnaz are Licensed by DeLuca, Inc. LLC. Licensing by Unforgettable Licensing.

2000, 8. März
Fernsehserie: I Love Lucy™

3373 - 3381
3382 182.436
3383 182.427



Sierra Leone Le5000

1 LOVE LUCY is a registered trademark of CBS Worldwide Inc. Images of Lucille Ball & Desi Arnaz are Licensed by DeLuca, Inc. LLC. Licensing by Unforgettable Licensing.



Sierra Leone Le5000

1 LOVE LUCY is a registered trademark of CBS Worldwide Inc. Images of Lucille Ball & Desi Arnaz are Licensed by DeLuca, Inc. LLC. Licensing by Unforgettable Licensing.

2000, 29. Mai
25. Jahrestag des Kupplungsmanövers
der Raumkapseln Apollo 18 und Sojus 19

Sierra Leone



3.541-43



3544/180.454

Van dit kavel is een deel gefotografeerd.

Part of this lot has been photographed.

Ein Teil dieses Loses wurde fotografiert.

Une partie de ce lot a été photographiée.

Часть этого лота сбита.

该拍品的一部分已被拍摄。

このロットの一部が撮影されました。