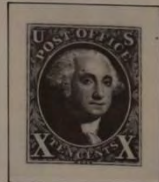


UNITED STATES OF AMERICA

1847



1851 - '56. Imp.

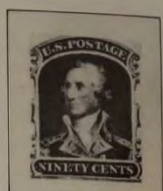
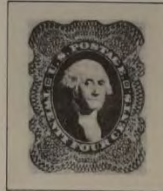


UNITED STATES OF AMERICA

1857 - '61. Perf. 15



T II
5 c.
brown
brun



1861 - '66



UNITED STATES OF AMERICA

1869



1870-'88



UNITED STATES OF AMERICA

1875



1882 - '88



1890 - '93



UNITED STATES OF AMERICA

1893



\$ 2
brown red
rouge-brun

\$ 3
green
vert

\$ 4
red
rouge



UNITED STATES OF AMERICA

1894. Unwatermarked. Sans filigrane



1895. U.S.P.S. double-line watermark. Avec filigrane



\$ 1
black
noir

\$ 2
blue
bleu

\$ 5
green
vert

UNITED STATES OF AMERICA

1898 - '99



1898



UNITED STATES OF AMERICA

1901



1902 - '03



UNITED STATES OF AMERICA

1903



1904



1907



1909



1909



1909



UNITED STATES OF AMERICA

1908 - '09. Double-line watermark. Fil. à double trait



1910 - '15. Single-line watermark. Fil. à simple trait



UNITED STATES OF AMERICA

1912-'15



1917. No wmk. Sans fil. 10x



1919



1920



UNITED STATES OF AMERICA

1916-'19. No wmk. Sans fil.



UNITED STATES OF AMERICA

1922 - '31



UNITED STATES OF AMERICA

1923



1924



1925



1925



1926



1926



1927



UNITED STATES OF AMERICA



UNITED STATES OF AMERICA

1929



1 1/4 c.
brown
brun

2 c.
red
rouge

3 c.
violet

4 c.
brown
brun

5 c.
blue
bleu

6 c.
orange

7 c.
black
noir

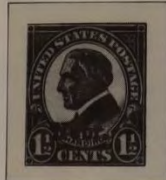
8 c.
olive

9 c.
rose

10 c.
yellow orange
orange-jaune

1929

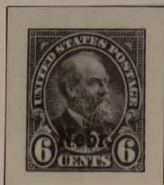
1 c.
green
vert



3 c.
violet

4 c.
brown
brun

5 c.
blue
bleu



7 c.
black
noir

8 c.
olive

9 c.
rose

10 c.
yellow orange
orange-jaune

UNITED STATES OF AMERICA

1930



1931



1930



1931



1931



1932



1932



UNITED STATES OF AMERICA

1932



1932



1933



1932



1932



1932



1933



1933



1933



1933



1934



1934



1933



1934



UNITED STATES OF AMERICA

1934



UNITED STATES OF AMERICA

1935



1935



1936



1935



1935



1936



1936



1936



1936



1937



1937



1937



1937

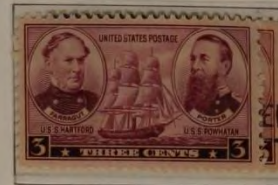


UNITED STATES OF AMERICA

1936 - '37



1936 - '37



1937



1937



1937



UNITED STATES OF AMERICA

1938



UNITED STATES OF AMERICA

1938



1938



1938



1939



1938



1939



1939



1939



1939



1939



1939



1940



1940



UNITED STATES OF AMERICA

1940 - '41



UNITED STATES OF AMERICA



1940



1940



1941



1940



1942



UNITED STATES OF AMERICA

1943 - '44



UNITED STATES OF AMERICA

1941



1942



1943



1942



1944



1944



1944



1944



UNITED STATES OF AMERICA

1945



1945



1945



1945



1945



1945



1945



1945



UNITED STATES OF AMERICA

1945



1945



1946



1946



1946



1946



1946



1946



1946



1947



UNITED STATES OF AMERICA

1947



1947



1947



1947



1947



1948



1948



1948



1948



1948



UNITED STATES OF AMERICA

1948



1948



1948



1948



1948



1948



1948



1948



1948



1948



1948



1948



UNITED STATES OF AMERICA

1948



1948



1948



1948



1948



1948



1948



1948



1948



1948



1948



UNITED STATES OF AMERICA

1949



1949



1949



1949



1949



1949



1949



1950



1950



1950



1950



UNITED STATES OF AMERICA

1950



1950



1950



1950



1950



1951



1951



1951



1951



1951



1951



1952



1952



1952



UNITED STATES OF AMERICA

1952



1952



1952



1952



1952



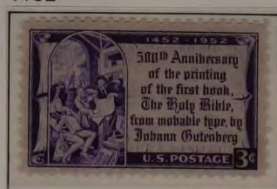
1952



1952



1952



1953



1953



1953



1953



UNITED STATES OF AMERICA

1953



1953



1953



1953



1953



1953



1953



1953



1953



1953



UNITED STATES OF AMERICA

1954 - '59



UNITED STATES OF AMERICA

1953



1954



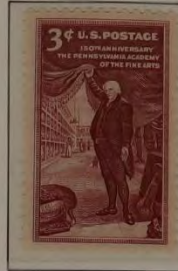
1954



1954



1955



1954



1955



1955



1955



1955



1955



UNITED STATES OF AMERICA

1955



1955



1955



1956



1956



1956



1956 - '57



UNITED STATES OF AMERICA

1956



1956



1956



1956



1956



1956



1957



1957



1957



1957



1957



1957



UNITED STATES OF AMERICA

1957



1957



1957



1957



1957



1957



1958



1958



1958



1958-'61



UNITED STATES OF AMERICA

1958



1958



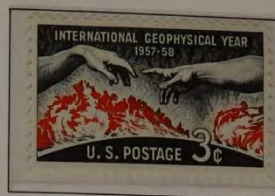
1958



1958



1958



1958



1958



1958



1958



1958



1958



UNITED STATES OF AMERICA

1958



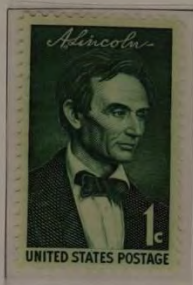
1958



1958



1959



1959



1959



1959

1959



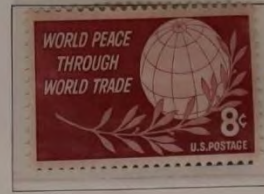
1959



1959



1959



UNITED STATES OF AMERICA

1959



1959



1959



1959



1959



1959



1959



1959

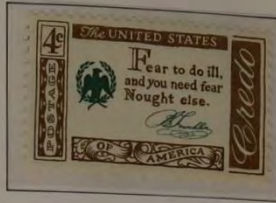
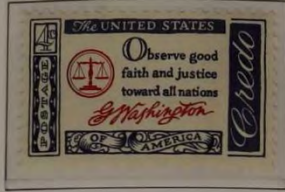


1959



UNITED STATES OF AMERICA

1960 - '61



1960



1960



1960



1960



UNITED STATES OF AMERICA

1960



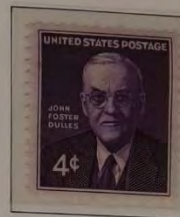
1960



1960



1960



1960



1960



1960



1960



1960



UNITED STATES OF AMERICA

1960



1961



1961



1961



1961



1961



1961



1961



1961



1961



UNITED STATES OF AMERICA

AIRMAIL STAMPS

1918



1923



1926 - '27



1927



1928



UNITED STATES OF AMERICA

1930 - '34



1930



1933



1934



1936



1935



UNITED STATES OF AMERICA

1937



1938



1939



1941 - '44



UNITED STATES OF AMERICA

1947-'49



1946



1947



1949



1948



1949



1949



UNITED STATES OF AMERICA

1952



1953



1954 - '58



1957



1958 - '60



1958



1959



1959



UNITED STATES OF AMERICA

1959



1959 - '61



1962



1963



1963



1964



UNITED STATES OF AMERICA

1933

CHICAGO EXHIBITION
AMERICAN PHILATELIC SOCIETY

UNDER AUTHORITY OF JAMES A. FARLEY, POSTMASTER GENERAL AT A CENTURY OF PROGRESS

PRINTED BY THE TREASURY DEPARTMENT, BUREAU OF ENGRAVING AND PRINTING



IN COMPLIMENT TO THE AMERICAN PHILATELIC SOCIETY FOR ITS CONVENTION AND EXHIBITION

CHICAGO, ILLINOIS, AUGUST 1933. PLATE NO. 21160

UNITED STATES OF AMERICA

NEW YORK
1934. NATIONAL STAMP EXHIBITION



UNITED STATES OF AMERICA

1934 OMAHA
TRANS-MISSISSIPPI PHILATELIC EXPOSITION



UNITED STATES OF AMERICA

NEW YORK

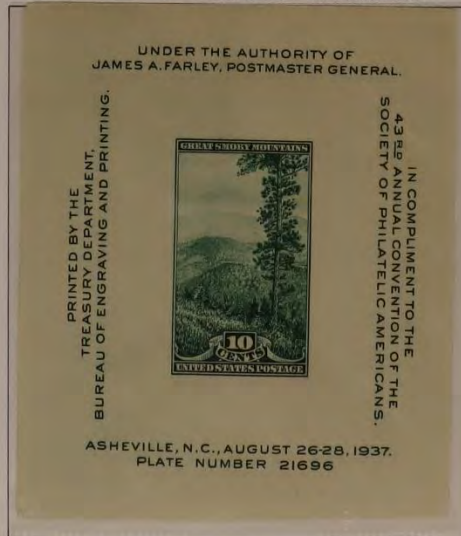
1936

THIRD INTERNATIONAL EXHIBITION



21557 + 58

ASHEVILLE. CONVENTION OF THE
1937 SOCIETY OF PHILATELIC AMERICANS



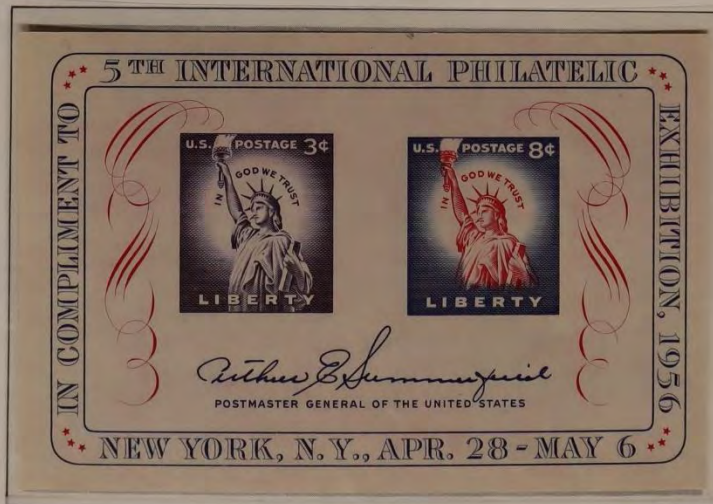
UNITED STATES OF AMERICA

SOUVENIR SHEETS

1947



1956



UNITED STATES OF AMERICA

SPECIAL DELIVERY STAMPS

1885



1888



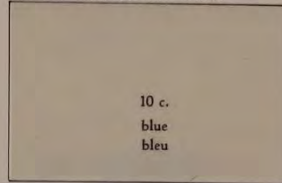
1893



1894



1895. Double-line wmk.



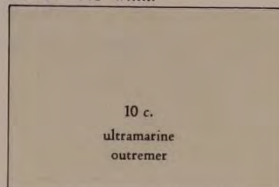
1902. Double-line wmk.



1908



1916. No wmk.



1922 - '44



1925



UNITED STATES OF AMERICA

SPECIAL DELIVERY

1954 - '57



1969 - '71



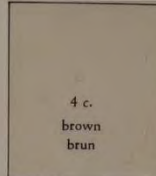
UNITED STATES OF AMERICA

IMPERFORATED STAMPS

1906 - '08



1908 - '09. Double-line watermark. Fil. à double trait.



1909



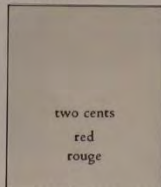
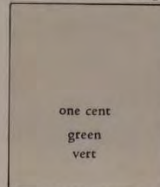
1909



1909



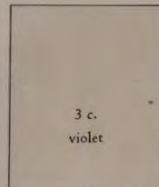
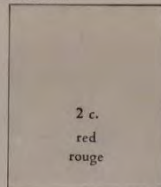
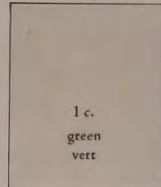
1910 - '15. Single-line wmk.



1912. Single-line wmk.



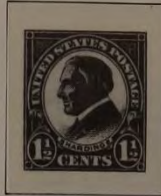
1916 - '17. No watermark.



UNITED STATES OF AMERICA

IMPERFORATED STAMPS

1923 - '25



1923



1933



1934



1934



1934



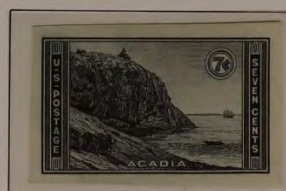
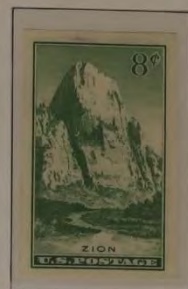
1935



UNITED STATES OF AMERICA

IMPERFORATED STAMPS

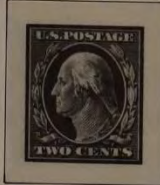
1935



UNITED STATES OF AMERICA

COIL STAMPS

1908-'09. Double-line wmk. Perf. 12 hor.



4 c.
brown
brun

5 c.
blue
bleu

Perf. 12 vert.

one cent
green
vert

two cents
red
rouge

4 c.
brown
brun

5 c.
blue
bleu

10 c.
yellow
jaune

1910-'15. Single-line wmk.

Perf. 12 hor.

one cent
green
vert

two cents
red
rouge

Perf. 12 vert.

one cent
green
vert

two cents
red
rouge

Perf. 8 $\frac{1}{2}$ hor.

one cent
green
vert

two cents
red
rouge

Perf. 10 vert.



4 c.
brown
brun



Perf. 8 $\frac{1}{2}$ vert.

one cent
green
vert

two cents
red
rouge

3 c.
violet

4 c.
brown
brun

5 c.
blue
bleu

UNITED STATES OF AMERICA

COIL STAMPS

1912-'15. Single-line wmk.

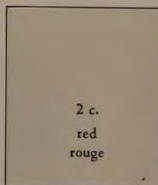
Perf. 10 hor.



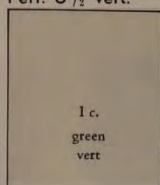
Perf. 10 vert.



Perf. 8½ hor.



Perf. 8½ vert.



1923-'25. Perf. 10 hor.



1923-'31. Perf. 10 vert.



UNITED STATES OF AMERICA

COIL STAMPS

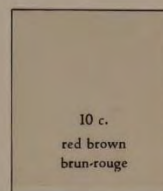
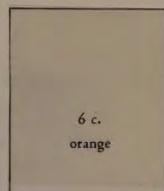
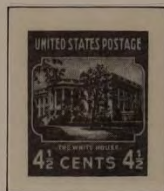
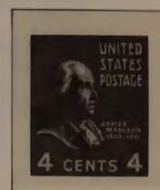
1929. Perf. 10 vert.



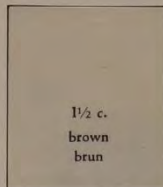
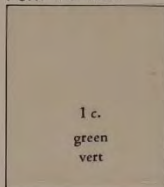
1932. Perf. 10 hor. Perf. 10 vert.



1938. Perf. 10 vert.



Perf. 10 hor.



AIR MAIL



UNITED STATES OF AMERICA

COIL STAMPS
(PERF. VERT.)

1954 - '59



1959



1963



UNITED STATES OF AMERICA

COIL STAMPS

1947 - '49



1958 - '60



1962



1968



1971



UNITED STATES OF AMERICA

CERTIFIED MAIL

1955



UNITED STATES OF AMERICA

POSTAGE DUE STAMPS

1879



5 c.
brown
brun

10 c.
brown
brun

30 c.
brown
brun

50 c.
brown
brun

1887 - '89



3 c.
brown red
rouge-brun

5 c.
brown red
rouge-brun

10 c.
brown red
rouge-brun

30 c.
brown red
rouge-brun

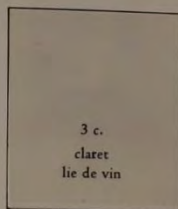
50 c.
brown red
rouge-brun

UNITED STATES OF AMERICA

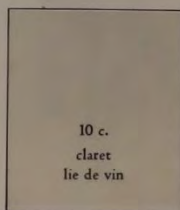
1891



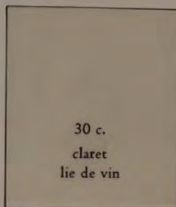
2 c.
claret
lie de vin



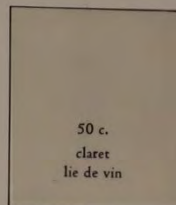
3 c.
claret
lie de vin



10 c.
claret
lie de vin



30 c.
claret
lie de vin

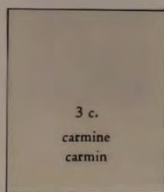


50 c.
claret
lie de vin

1894



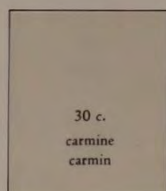
2 c.
carmine
carmin



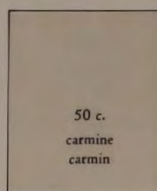
3 c.
carmine
carmin



10 c.
carmine
carmin



30 c.
carmine
carmin



50 c.
carmine
carmin

UNITED STATES OF AMERICA

1895. Double-line watermark.



30 c.
carmine
carmin

50 c.
carmine
carmin

1910-'15. Single-line watermark.



1 c.
carmine
carmin

5 c.
carmine
carmin

10 c.
carmine
carmin

30 c.
carmine
carmin

50 c.
carmine
carmin

UNITED STATES OF AMERICA

1917-'25, Unwatermarked.

1/2 c.
carmine
carmin



30 c.
carmine
carmin

50 c.
carmine
carmin

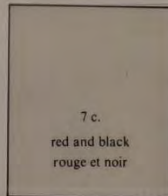
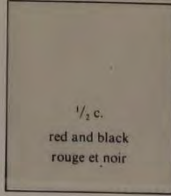
1930



UNITED STATES OF AMERICA

POSTAGE DUE

1959-'78



UNITED STATES OF AMERICA

PARCEL POST

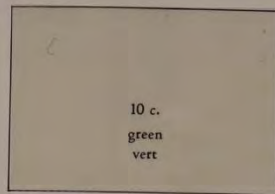
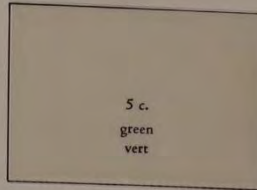
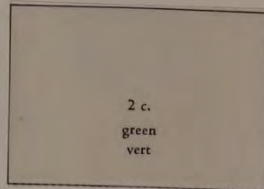
1912-'13



UNITED STATES OF AMERICA

PARCEL POST POSTAGE DUE

1912



SPECIAL HANDLING

1925 - '28



UNITED STATES OF AMERICA

OFFICIAL STAMPS

1873. AGRICULTURE



6 c.
yellow
jaune

10 c.
yellow
jaune

12 c.
yellow
jaune

15 c.
yellow
jaune

24 c.
yellow
jaune

30 c.
yellow
jaune

1873. EXECUTIVE



2 c.
carmine
carmin

3 c.
carmine
carmin



10 c.
carmine
carmin

1873. INTERIOR

1 c.
orange



10 c.
orange



15 c.
orange



30 c.
orange

90 c.
orange

UNITED STATES OF AMERICA

1873. JUSTICE



2 c.
violet

3 c.
violet

6 c.
violet

10 c.
violet

12 c.
violet

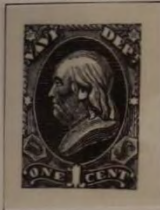
15 c.
violet

24 c.
violet

30 c.
violet



1873. NAVY



2 c.
blue
bleu



6 c.
blue
bleu

7 c.
blue
bleu

10 c.
blue
bleu

12 c.
blue
bleu

15 c.
blue
bleu

24 c.
blue
bleu





90 c.
blue
bleu

UNITED STATES OF AMERICA

1873 POST OFFICE

1 c. black noir				10 c. black noir
12 c. black noir	15 c. black noir	24 c. black noir	30 c. black noir	90 c. black noir

1873. STATE

	2 c. green vert	3 c. green vert	6 c. green vert	7 c. green vert	10 c. green vert
12 c. green vert	15 c. green vert	24 c. green vert		90 c. green vert	
	\$ 5 green and black vert et noir	\$ 10 green and black vert et noir	\$ 20 green and black vert et noir		

UNITED STATES OF AMERICA

1873. TREASURY



7 c.
brown
brun



15 c.
brown
brun



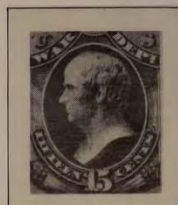
1873. WAR



7 c.
brown red
rouge-brun



12 c.
brown red
rouge-brun



24 c.
brown red
rouge-brun



90 c.
brown red
rouge-brun

1910-'11. POSTAL SAVINGS



50 c.
green
vert

\$ 1
blue
bleu

UNITED STATES OF AMERICA

OFFICIAL CARRIERS STAMPS

1851



1851



REGISTRATION STAMP

1911



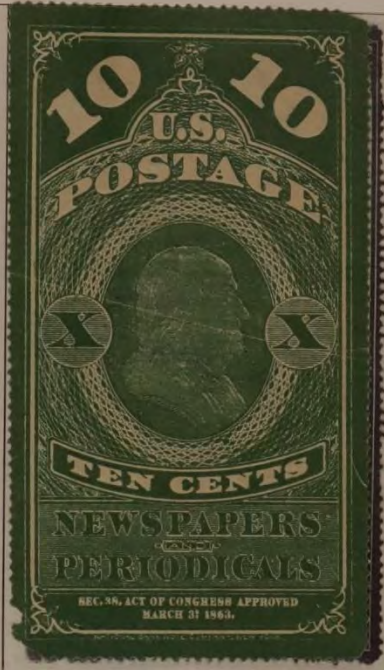
UNITED STATES OF AMERICA

NEWSPAPER STAMPS

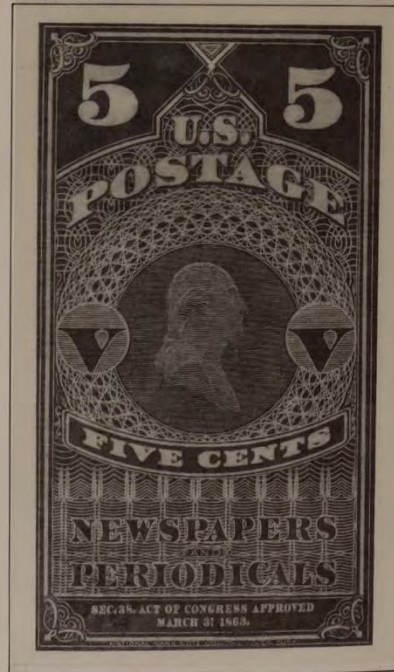
1865

Colored border
Bordure coloré

5 c.
blue
bleu

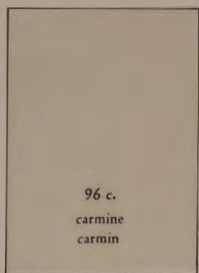
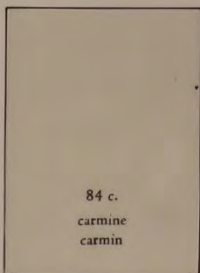
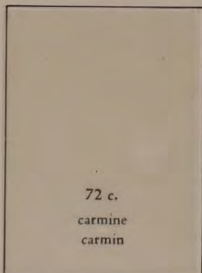
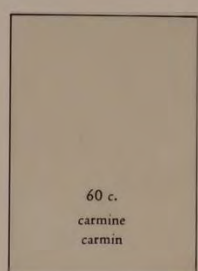
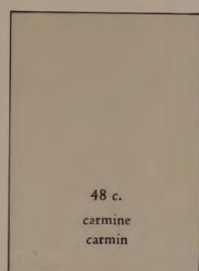
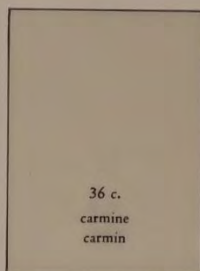
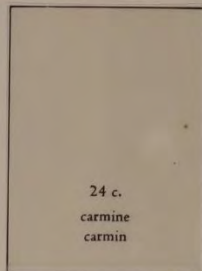
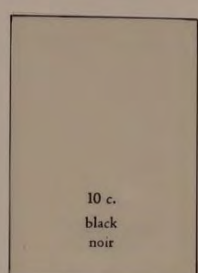
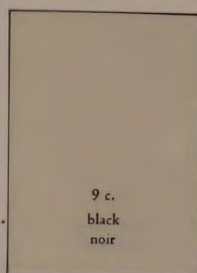
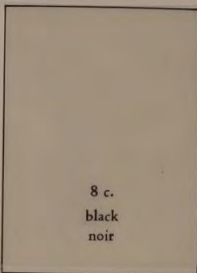
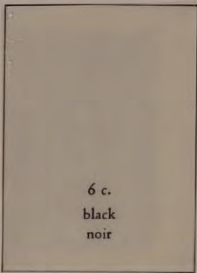
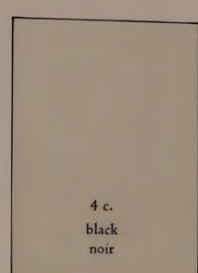
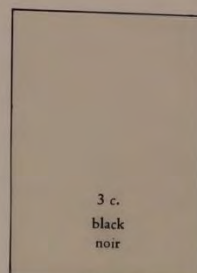
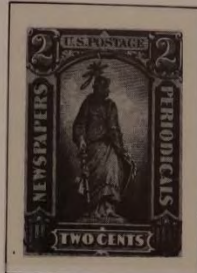
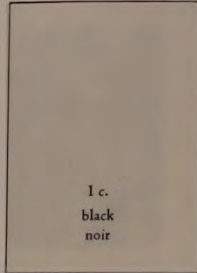


White border



UNITED STATES OF AMERICA

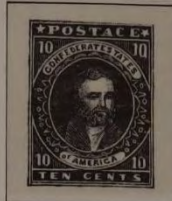
1875 - '85



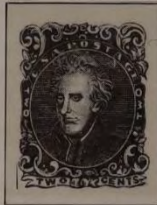
UNITED STATES OF AMERICA

CONFEDERATE STATES

1861



1862



5 c.
blue
bleu

10 c.
rose

1862

1 c.
orange



1863 - '64

