



51

Amerika (U.S.).
Collectie/paartj vnl. gebruikt
met prima klassiek deel
1851 t/m ± 1955 in 4 in-
steekboeken
145
Rietdijk
Noordeinde 41, 2514 CC Den Haag
Tel.: 070-3647957
info@rietdijkveilingen.nl www.rietdijkveilingen.nl
51.

0423
0425
66119
140418

Storage instructions: Keep Frozen at -18 ° C.
Do not refreeze after defrosting.





1851

1857

1861

1869

1870



1882



1885-1888
special



1887



1890



1893



broken
hat



TEN
↑



1894
zonder
wm



1894
specaal



1895
met
wm



7+



1898





1898



10c
type II



2c
3z.



1902
special



1901



1902



idem
3z



idem
7z.



1903
type I



idem
ange-
land



idem
3z.



type II



1904



1907



1908
t. 12



idem
3z.



idem
2z.



ange-
land



1909



1912
of
1916
t.10



idem
7



idem
17



idem
32.



ong-
tand



1912
t.12



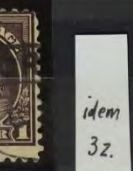
idem
t.10



1912
t.12



1916
t.11



idem
3z.



idem
licht



idem
t.10
x
11



1919



1920



1922
special
t.11



t.11
x10 1/2



1922
t.10



idem
in
w



idem
5 3



idem
t.11





idem
t. 11
x 10 1/2

RIKS
NOV 25

NEW YORK
SEP 23
1923

NEW YORK

idem
22

idem
3z

1923

1924

1925

idem
t. 11
x 10 1/2

1926
LP



1926



1927
LP



1927



1928



1928
LP



1928
opdr.



1928



1929



idem
Nebr.



1929
t.11



t.11
x
10 1/2



t.10
22.



1930



1930
LP



L.11



1931



1932



1932



1932



1932



1933



1933



1934





1934
t.11
x10 $\frac{1}{2}$

idem
t.11

1934

1934
LP

1935

1935

1935
LP

1936

1936-
37

Clear
??



1936

1937
LP

1937

1937

1938
t. 11
x 10 1/2

idem
32

idem
22.

1954

1940

schrij-
vers



dichters



peda-
gogen



weten-
schap-
pers



musici



artis-
ten



uit-
vin-
alers



1941

LP



1945



1946



1946



1946 LP



1946



1947



1947 LP



1947



1947



1947



UNDER AUTHORITY OF
ROBERT E. HANNEGAN, POSTMASTER-GENERAL

PRINTED BY THE
TREASURY DEPARTMENT
BUREAU OF ENGRAVING AND PRINTING

IN COMPLIMENT
TO THE CENTENARY INTERNATIONAL
PHILATELIC EXHIBITION

IN COMPLIMENT
TO THE CENTENARY INTERNATIONAL
PHILATELIC EXHIBITION

100TH ANNIVERSARY
UNITED STATES POSTAGE STAMPS

NEW YORK, N. Y., MAY 17-25, 1947

1947 LP



1947



Dienst
1873/9
Interior



Trea-
sury



War



Post
office



Postal
Savings
1910/11



PARCEL
POST
1912



1925



PORT
1879



1910

t.12

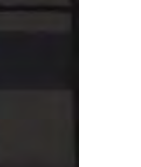


1916/25

t.11



1931
Hunted
t.11
x
10 1/2



idem
Food



1959



1862



TELE-
GRAAF
-
1881



HAWAII
1851

1859



1864



1871



1882



1882



1884



1891



1893

opdr.



1894



1899



PORTO
RICO



standing
3zijdig

1861

1870

1882

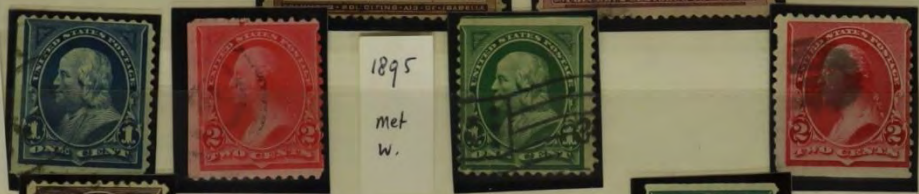
1890



1893



1894
z.w



1895
met
w.

1898



1901



1902



1903



1904



1908

t. 12

1909



1912
t. 10



1912
t. 12



1912
t. 12



1916
t. 11





1919

1920



1922

t. 11



1923

t. 11



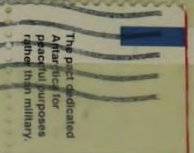
1924

1925

t. 11



Vervolg
1991



Burma Road, 717-mile lifeline to China

America's first peacetime draft, 1940

Atlantic Charter sets war aims of allies

U.S. supports allies with Lend-Lease Act

America becomes "arsenal of democracy"

Japanese bomb Pearl Harbor, December 7

U.S. declares war on Japan, December 8

1941: A World at War

Japanese bomb Pearl Harbor, December 7

U.S. declares war on Japan, December 8

First Liberty ship delivered December 30

Atlantic Charter sets war aims of allies

U.S. supports allies with Lend-Lease Act

America becomes "arsenal of democracy"

Destroyer Reuben James sunk October 31

Civil Defense mobilizes Americans at home

Japanese bomb Pearl Harbor, December 7

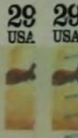
U.S. declares war on Japan, December 8

Jan E. Matzeliger
Sho Lasting Machine No. 274, 207 Patented March 20, 1885

Black Heritage USA

Presorted First-Class
USA 23

UNITED STATES POSTAL SERVICE
USA
OFFICIAL SPONSOR OF THE 1992 U.S. OLYMPIC TEAM
\$1



This is the third in a series of World War II 50th anniversary stamp sheets being issued by the U.S. Postal Service from 1991 through 1995.

© United States Postal Service 1992

1943: Turning the Tide

ASIA
Extent of Japanese control at end of 1943
Japanese merchant-ship losses to U.S. submarines and aircraft, 200,000 tons per month by

PACIFIC
U.S. recaptures Attu and Kiska in the Aleutians.
U.S. hits Gilbert Islands. Marines take Tarawa, November 20.
Army takes Makin, New Britain and New Guinea.
Allies go on the offensive in the Solomons.

AMERICA
Allied bombers hammer German targets but sustain heavy losses. U.S.S.R. Stalin, Roosevelt, Churchill meet in Tehran, November 28.
North Africa cleared of Axis forces when Germans surrender in Tunisia in May.
Roosevelt and Churchill demand "unconditional surrender" at Casablanca in January.

EUROPE
Extent of German control at end of 1943
German U-boat offensive blunted in North Atlantic.
Allies invade Sicily in July and Italy in September. German counterattack repulsed at Salerno.
Small deliveries of letters from home, 1943.

ATLANTIC
B-24s hit Ploesti refineries, August, 1943.
Military medical treat the wounded, 1943.
Staly attacked by Allied forces, July, 1943.

INDIA
Marrines assault Tarawa, November, 1943.
Gold Stars mark World War II losses, 1943.
"Yippee and low" keep spirits high, 1943.
Bonds and stamps help war effort, 1943.

USA 29





1995



PLATE POSITION
P111 1



1977





t.
11 x
12



t. 11



1980





idem
t. 11/4





UNITED STATES POSTAL SERVICE 1981



Presidents of
the United States: I



AMERIPEX 86
International
Stamp Show
Chicago, Illinois
May 22 - June 1, 1986

UNITED STATES POSTAL SERVICE 804





Van dit kavel is een deel gefotografeerd.

Part of this lot has been photographed.

Ein Teil dieses Loses wurde fotografiert.

Une partie de ce lot a été photographiée.

Часть этого лота сбита.

该拍品的一部分已被拍摄。

このロットの一部が撮影されました。