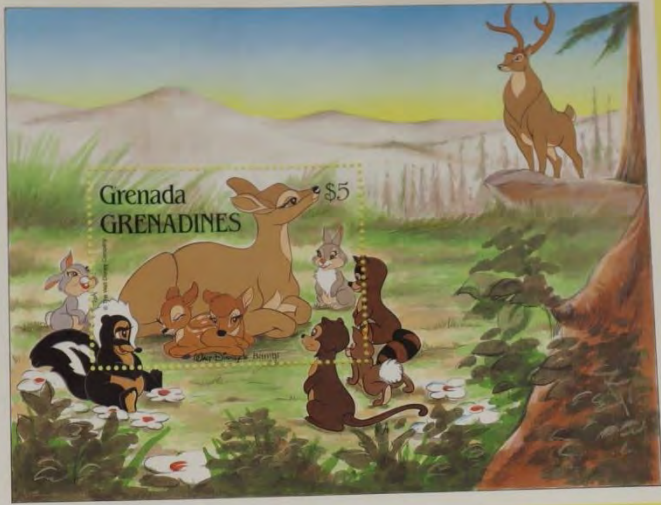


1988 991-999 +blad 152



The **Disney** Animal Stories
in Postage Stamps

Bambi



1993 លេខ 278 + 279

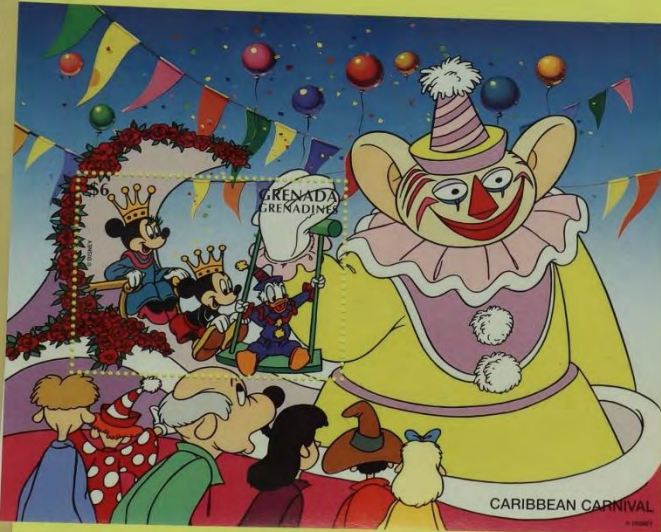


1995 2075-2078 + b664 325

50th ANNIVERSARY OF FAO



1996 block 347 + 348



1996 2307-2312 + bloc 351



1997 2466-2468 + 0104 386



1997 2638-2643 + blok 403



001 2097-2098

The image displays a collection of eight Grenada Grenadines postage stamps, each valued at \$1.50, arranged in a 4x2 grid. Each stamp features a different dinosaur species in a naturalistic setting. The stamps are:

- Top-left: A Carnotaurus (Carnotaurus) with horns and a frill.
- Top-right: A Spinosaurus (Spinosaurus) with a long, pointed snout.
- Second row, left: A Spinosaurus (Spinosaurus) with a long, pointed snout.
- Second row, right: A Euilicephalus (Euilicephalus) with a large, rounded head.
- Third row, left: A Triceratops (Triceratops) with three horns and a frill.
- Third row, right: A Diplodocus (Diplodocus) with a long neck and tail.
- Bottom row, left: A Stegosaurus (Stegosaurus) with a row of bony plates along its back.
- Bottom row, right: A Stegosaurus (Stegosaurus) with a row of bony plates along its back.

To the right of the stamps is a logo for the "World Stamp EXPO Australia '97".

Below the stamps, the text "THE AGE OF DINOSAURS" is written in a large, bold, black, sans-serif font, slanted upwards from left to right. To the right of this text is a large, black silhouette of a long-necked dinosaur, likely a Diplodocus, standing and facing right.



400TH ANNIVERSARY OF
ANTHONY VAN DYCK
(1599 - 1641)

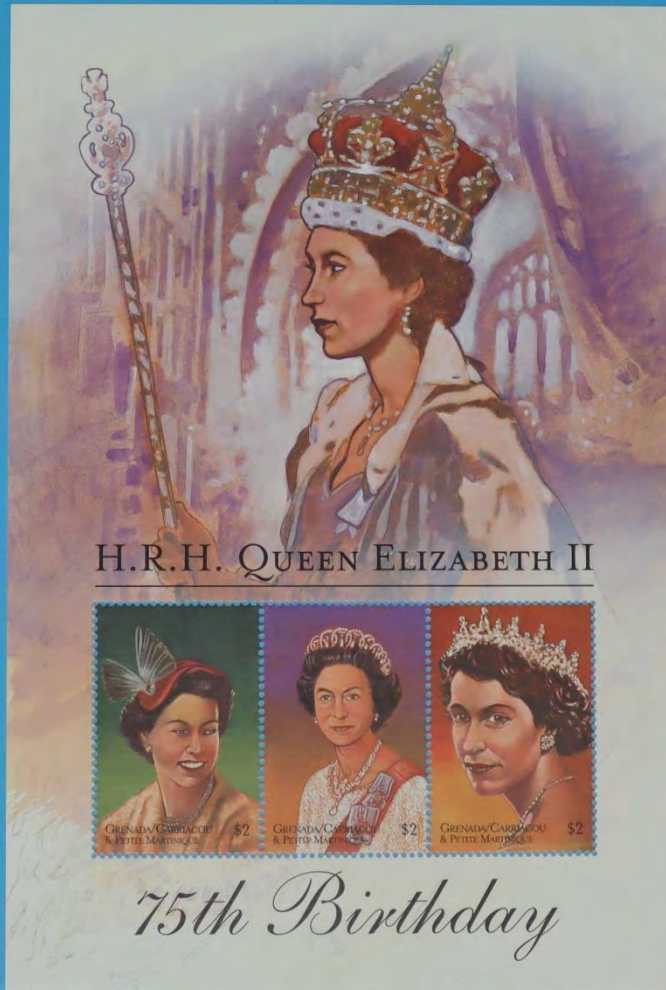
ITALIAN PORTRAITS



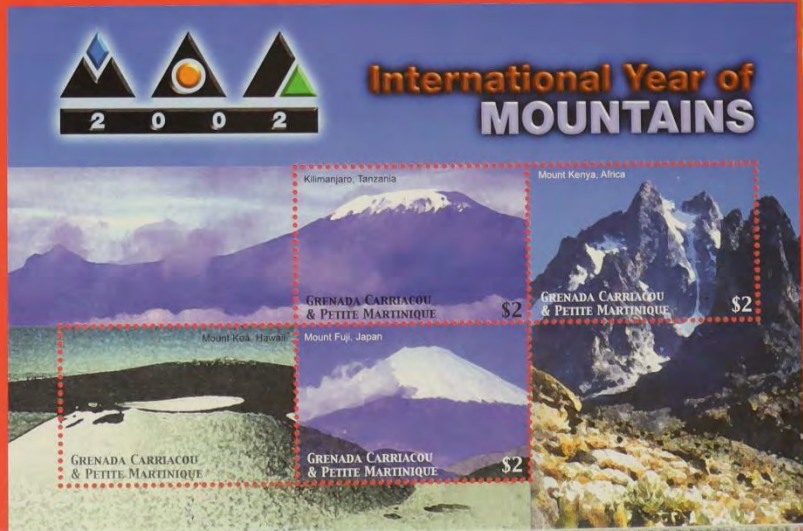
200 3346-3351 + 664 493



2001 3594-3596



2002 0101 214 x 211 711



2003 3937-3940

THE LIFE AND TIMES OF
JFK

Grenada Carriacou & Petite Martinique \$2

Grenada Carriacou & Petite Martinique \$2

Grenada Carriacou & Petite Martinique \$2

Grenada Carriacou & Petite Martinique \$2

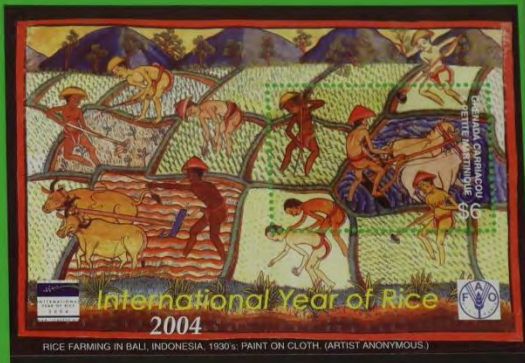
John F. Kennedy
40th Memorial
Anniversary
(1963 - 2003)

DESIGN: THE MOUNTAIN STUDIO

2004 4033-4036



2005 4160-4465 + block 596



ONE OF A PAIR OF SIX-PANEL SCREENS BY
 MARIYAMA OSHEN (1790-1838), JAPAN.
 INK, COLOR AND GOLD ON PAPER



International Year of Rice

2004

This magnificent gilded screen depicting rice plants heavy with grain in the autumn, is part of a pair. (The other screen shows verdant shoots of barley in the spring.) The screens epitomize the concept of seasonality in Japanese art and the Japanese reverence for rice as an element in an idealized landscape.



2006 4296-4299



Saint Willibrod in Adoration before Mary Mother of God, c. 1630-1631

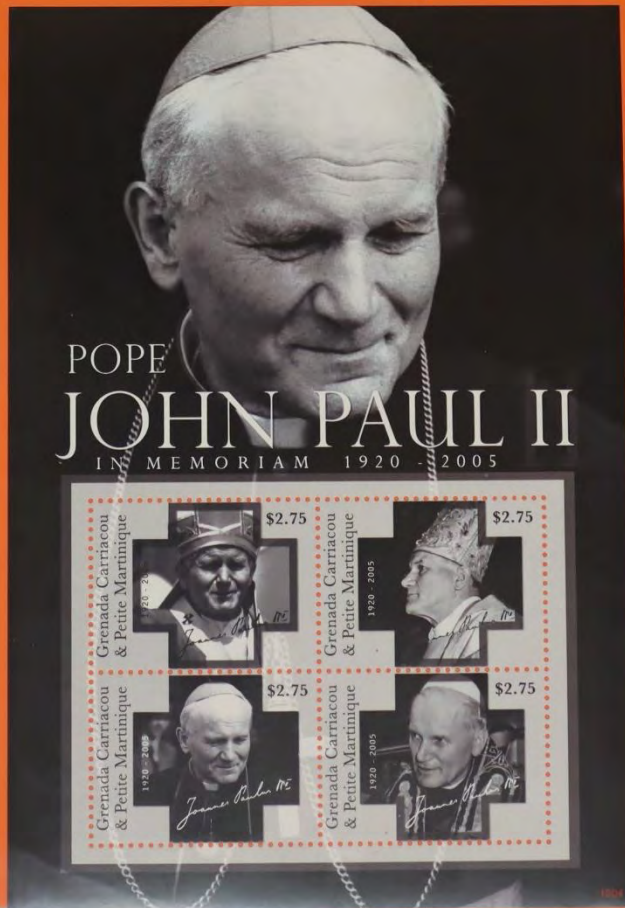
Christmas 2006



Peter Paul Rubens 1577-1640

6 April 2010

4560-4563



20 june 2014



Van dit kavel is een deel gefotografeerd.

Part of this lot has been photographed.

Ein Teil dieses Loses wurde fotografiert.

Une partie de ce lot a été photographiée.

Часть этого лота сбита.

该拍品的一部分已被拍摄。

このロットの一部が撮影されました。