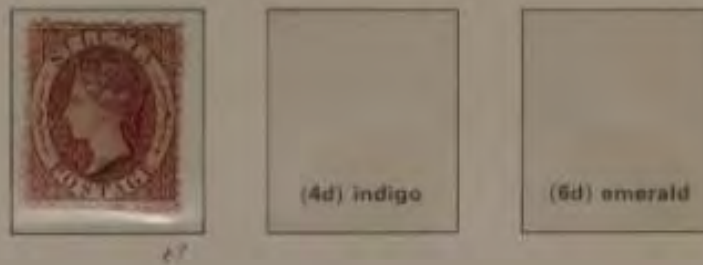


Queen Victoria 1837-1901

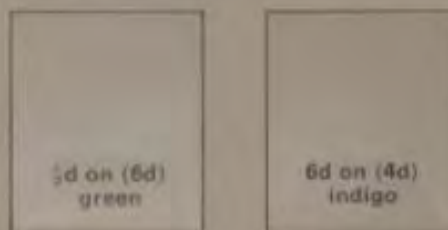
1860-18th December. Printed by Perkins, Bacon.
Small star watermark. Perf 14 to 15.



1863: as before. Printed by De La Rue.
Crown 'CC' watermark. Perf 12½.



As before: surcharged. Prepared for use, but not issued.



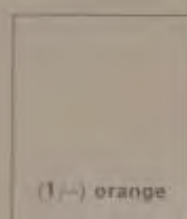
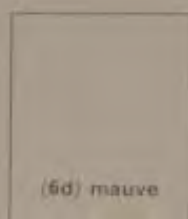
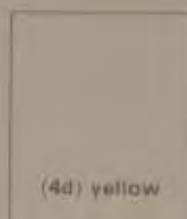
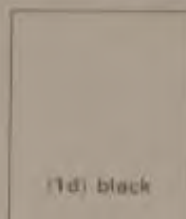
1864-19th November. Printed by De La Rue.
Crown 'CC' watermark. Perf 12½.



As before. Perf 14.



As before. Perf 13.



1861-September. As before. Surcharged.
Crown 'CC' watermark. Perf 14.



1882-4: as before. Surcharged.
Crown 'CA' watermark. Perf 14.



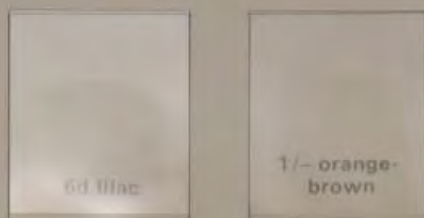
Ek



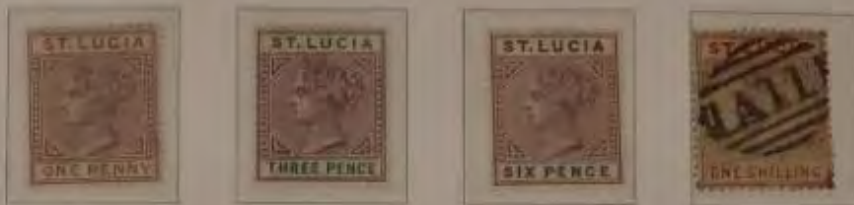
As before. Perf 12.



1882-6: printed by De La Rue, Die I.
Crown 'CA' watermark. Perf 14.



1886-7: as before. Printed by De La Rue. Die I.
Crown 'CA' watermark. Perf 14.



1891-8: as before. Printed by De La Rue. Die II.
Crown 'CA' watermark. Perf 14.



1891-2: as before. Surcharged. 6d bisected.



4.7 I 2

King Edward VII 1901-1910

1902-16th December. Printed by De La Rue.
Crown 'CC' watermark (sideways). Perf 14.



1902-3: printed by De La Rue.
Crown 'CA' watermark. Perf 14.



1904-10: as before. Printed by De La Rue.
Multiple crown 'CA' watermark. Perf 14.



3d purple
on yellow

6d purple
and violet

6d purple

7/- green
and black

1/- black
on green

5/- green
and carmine

5/- green
and red
on yellow

King George V 1910-1936

1912-20: printed by De La Rue.
Multiple crown 'CA' watermark. Perf 14.



1916-June. As before. Overprinted locally with 'WAR/TAX'.



1916-September. Overprinted in London with 'WAR TAX'.



1921-6 | as before. Printed by De La Rue.
Multiple script 'CA' watermark. Perf 14.



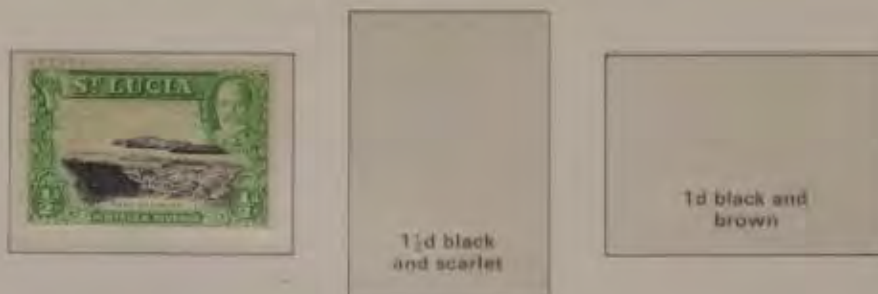
1935-6th May. Silver Jubilee. Designed by H. Fleury; printed by
De La Rue.
Multiple script 'CA' watermark. Perf 13½ × 14.



1936-March to April. Printed by De La Rue.
 Multiple script 'CA' watermark. Perf 13 x 12 (1/- and 10/-); 14
 (remainder)



As before. Perf 12 x 13 (1½d) : 13 x 12 (remainder).



King George VI 1936-1952

1937-12th May, Coronation. Printed by Bradbury, Wilkinson.
Multiple script 'CA' watermark. Perf $11 \times 11\frac{1}{2}$.



1946-8th October, Victory. Printed by De La Rue.
Multiple script 'CA' watermark. Perf $13\frac{1}{2} \times 14$.



1948-26th November, Silver Wedding. Printed by Waterlow (1d) and Bradbury, Wilkinson (£1).
Multiple script 'CA' watermark. Perf 14×15 (1d) : $11\frac{1}{2} \times 11$ (£1).



1938-48: printed by Waterlow (½d to 3½d, 8d, 3/- and £1);
 De La Rue (6d and 1/-) - Bradbury, Wilkinson (remainder).
 Multiple script 'CA' watermark.

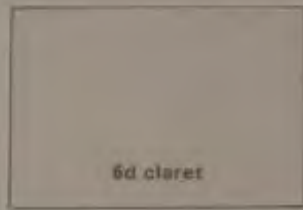
(i) Perf 12½



(ii) Perf 12



(iii) Perf $13\frac{1}{2}$



(iv) Perf $14\frac{1}{2} \times 14$



1949—10th October, 75th anniversary of the U.P.U. Printed by Waterlow (5c and 24c) - Bradbury, Wilkinson (6c and 12c). Multiple script 'CA' watermark. Perf $13\frac{1}{2}$ — 14 (5c and 24c); $11 \times 11\frac{1}{2}$ (6c and 12c).



1949-50: printed by Waterlow (1c to 16c) - Bradbury, Wilkinson
(remainder).
Multiple script 'CA' watermark. Perf 12½ (1c to 16c) - 11 × 11½
(remainder).



1951-16th February. Inauguration of B.W.I. University College.
Printed by Waterlow.
Multiple script 'CA' watermark. Perf 14 x 14½.



1951-25th September. New Constitution. Overprinted 'NEW/
CONSTITUTION/1951'.



1951-19th June. Reconstruction of Castries. Printed by Bradbury,
Wilkinson.
Multiple script 'CA' watermark. Perf 13½ x 13.



Queen Elizabeth II 1952

1953–2nd June. Coronation. Designed by Bradbury, Wilkinson;
 printed by De La Rue.
 Multiple script 'CA' watermark. Perf $13\frac{1}{2} \times 13$.



#1

1958–22nd April. Inauguration of British Caribbean Federation.
 Printed by Bradbury, Wilkinson.
 Multiple St Edward's crown 'CA' watermark. Perf $11\frac{1}{2} \times 11$.



#2



#3



#4

1960–1st January. New Constitution for the Windward and
 Leeward Islands. Printed by Waterlow.
 Multiple St Edward's crown 'CA' watermark. Perf 13.



#5



#6



#7

1953-4 : printed by Waterlow until 1936 then De La Rue (1c to 15c) : Bradbury, Wilkinson (remainder).
 Multiple script 'CA' watermark. Perf $14\frac{1}{2} \times 14$ (1c to 15c) : $11 \times 11\frac{1}{2}$ (remainder).



1960–18th December. Stamp Centenary. Printed by Waterlow.
Multiple St Edward's crown 'CA' watermark. Perf 13½.



1963–2nd September. Red Cross Centenary. Designed by V. Whiteley; printed by Bradbury, Wilkinson.
Multiple St Edward's crown 'CA' watermark. Perf 13½.



1963–4th June. Freedom from Hunger. Designed by M. Goaman;
printed by Harrison.
Multiple St Edward's crown 'CA' watermark. Perf 14 × 14½.



1964-1st March. Designed by V. Whiteley : printed by Harrison.
 Multiple St Edward's crown 'CA' watermark. Perf $14\frac{1}{2}$ (1c to 6c) :
 $14\frac{1}{2} \times 14$ (8c, 10c, \$1 and \$2.50) : $14 \times 14\frac{1}{2}$ (remainder).



1964-23rd April. Shakespeare. Designed by R. Granger-Barrett; printed by Harrison.
Multiple St Edward's crown 'CA' watermark. Perf 14 × 14½.



817

1965-17th May. I.T.U. Centenary. Designed by M. Goaman; printed by Enschedé.
Multiple St Edward's crown 'CA' watermark. Perf 11 × 11½.



818

819



820

821

1965-25th October. I.C.Y. Designed by V. Whiteley; printed by Harrison.
Multiple St Edward's crown 'CA' watermark. Perf 14½.



1966-4th February. Royal Visit. Designed by H. Baxter; printed by Bradbury, Wilkinson.
Multiple St Edward's crown 'CA' watermark. Perf 11 × 12.



1966–24th January. Churchill. Designed by J. Toombs: printed by Harrison.
Multiple St Edward's crown 'CA' watermark. Perf 14.



1966–1st July. World Cup Football Championships. Designed by V. Whiteley: printed by Harrison.
Multiple St Edward's crown 'CA' watermark (sideways). Perf 14.



1966–20th September. Inauguration of W.H.O. Headquarters, Geneva. Designed by M. Goaman: printed by Harrison.
Multiple St Edward's crown 'CA' watermark (sideways). Perf 14.



1966-1st December. 20th anniversary of U.N.E.S.C.O. Designed by J. Toombs; printed by Harrison. Multiple St Edward's crown 'CA' watermark (sideways). Perf 14.



1967-16th October. Christmas. Printed by Harrison. Multiple St Edward's crown 'CA' watermark. Perf 14½.



1968-8th March. M.C.C.'s West Indies Tour. Designed by V. Whiteley; printed by Harrison. Multiple St Edward's crown 'CA' watermark (sideways). Perf 14½ x 14.



1968-25th March, Easter. Printed by Harrison.
Multiple St Edward's crown 'CA' watermark (sideways). Perf
14 x 14½.



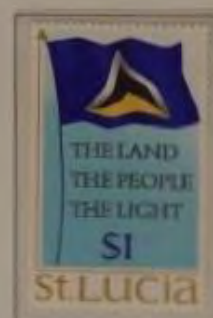
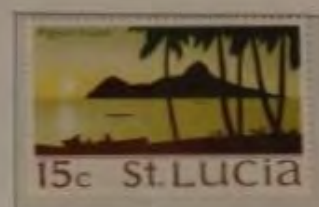
1968-17th October, Christmas. Designed and printed by Harrison.
Multiple St Edward's crown 'CA' watermark (sideways). Perf
14½ x 14.



1968-4th July, Martin Luther King. Designed by V. Whiteley;
printed by De La Rue.
Multiple St Edward's crown 'CA' watermark. Perf 13½ x 14.



1970-1st February. Designed by S. and M. Goaman; printed by Format International.
Multiple St Edward's crown 'CA' watermark, sideways on horizontal designs. Perf 14½.



1970-8th June. Death Centenary of Charles Dickens. Designed by V. Whiteley; printed by Bradbury Wilkinson. Multiple St Edward's crown 'CA' watermark. Perf 14.



1970-18th August. Centenary of The British Red Cross Society. Designed by R. Granger Barrett; printed by John Waddington. Multiple St Edward's crown 'CA' watermark. Perf 14.



1970-16th November. Christmas. Designed by Perkins Bacon; printed by Walsall Security Printers. No watermark. Perf 11.



1971 - 13th December, National Day. Designed and printed by Harrison. Multiple St. Edward's Crown 'CA' watermark.
Perf 14 x 14%.



S.A.F.E.

1972 - 15th February, Easter. Designed by G. Drummond; printed by Questa. Multiple St. Edward's Crown 'CA' watermark.
Perf 14.



1972 - 18th April, Morne Educational Complex. Designed by P. B. Powell; printed by Questa.
Multiple St. Edward's Crown 'CA' watermark.
Perf 14.



1973-1st February, Local Headdresses. Designed by Sylvia Goaman; printed by Alden and Mowbray. Multiple St. Edward's crown 'CA' watermark. Perf 13.



1973-19th April. Coil stamps. Designed and printed by Harrison. Multiple St. Edward's crown 'CA' watermark. Perf 14½ x 14.

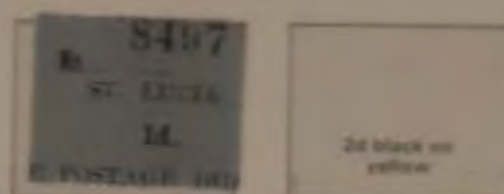


1973-24th May, Old Ships. Designed by R. Granger Barrett; printed by Questa. Multiple St. Edward's crown 'CA' watermark. Perf 14½.

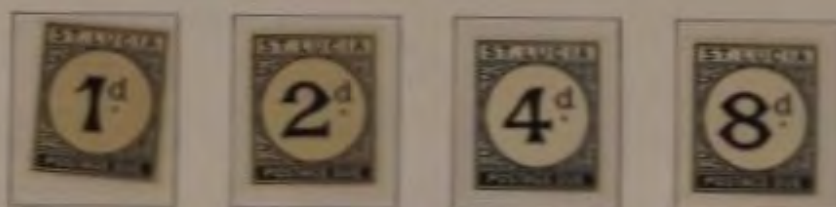


Postage Due Stamps

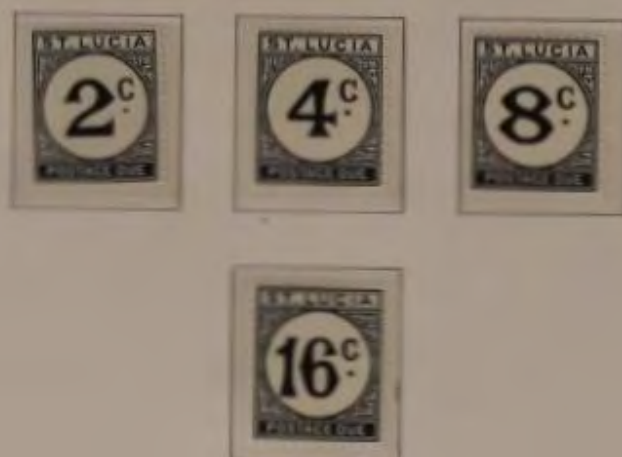
1931 : no watermark or gum.



1933-47 : printed by De La Rue.
Multiple script 'CA' watermark. Perf 14

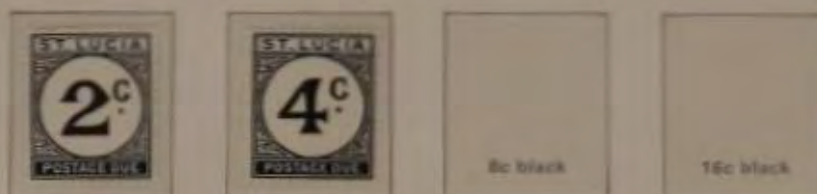


1949-1st October. Printed by De La Rue.
Multiple script 'CA' watermark. Perf 14.

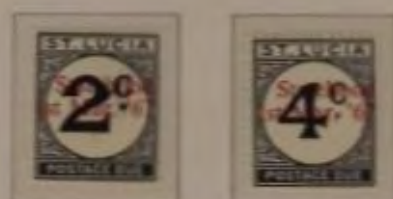


Postage Due Stamps

1952–27th November. Printed by De La Rue. Chalky paper.
Multiple script 'CA' watermark. Perf 14.

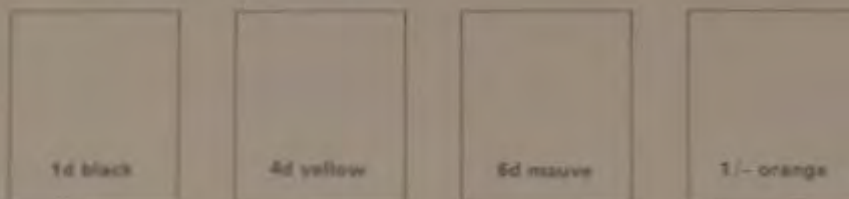


1965–9th March; As before.
Multiple St Edward's crown 'CA' watermark. Perf 14.

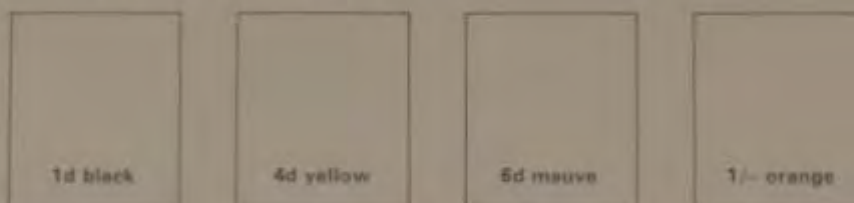


Fiscals allowed to be used for postage

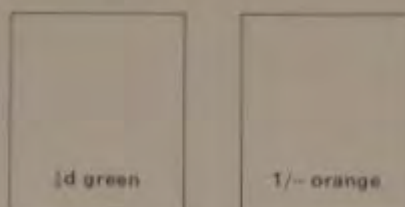
1881 : overprinted with value in small lettering.
Crown 'CC' watermark. Perf 14.



As before. Overprinted with value in larger lettering.
Crown 'CC' watermark. Perf 14.



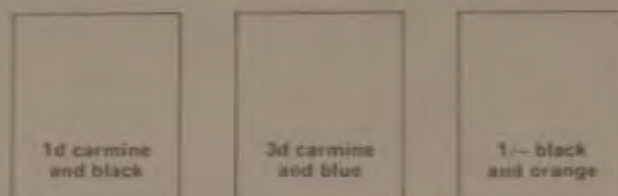
As before. Overprinted with value in large lettering.
Crown 'CC' watermark. Perf 14.



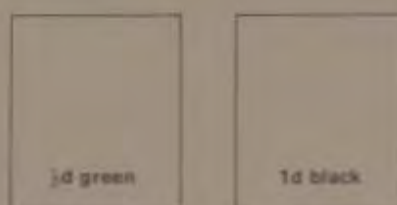
1882 : overprinted '(value)/REVENUE'.
Crown 'CA' watermark. Perf 14.



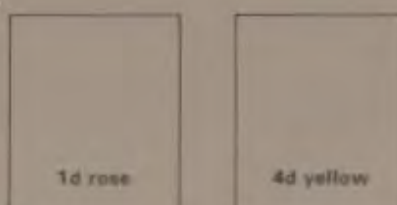
As before.
Crown 'CA' watermark. Perf 12.



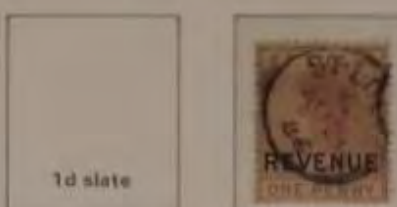
1883: surcharged stamps further overprinted locally with 'Revenue' at base.



1883: surcharged.



1884: overprinted 'REVENUE' locally.
Crown 'CA' watermark. Perf 14.



Van dit kavel is een deel gefotografeerd.

Part of this lot has been photographed.

Ein Teil dieses Loses wurde fotografiert.

Une partie de ce lot a été photographiée.

Часть этого лота сбита.

该拍品的一部分已被拍摄。

このロットの一部が撮影されました。