

국악악기 시리즈우표 (6)
POSTAGE STAMP OF
KOREAN MUSICAL INSTRUMENT SERIES



1974년 6월 20일 발행



국악악기 시리즈우표 (5)
POSTAGE STAMP OF
KOREAN MUSICAL INSTRUMENT SERIES



국악악기 시리즈우표 (8)
POSTAGE STAMP OF
KOREAN MUSICAL INSTRUMENT SERIES



1974년 8월 20일 발행

국악악기 시리즈우표 (7)
POSTAGE STAMP OF
KOREAN MUSICAL INSTRUMENT SERIES

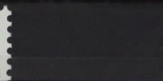


1974년 8월 20일 발행

대한민국 체신부







S. TOMÉ E PRÍNCIPE

Db 1500



S. TOMÉ E PRÍNCIPE

BUZINA 1996

S. TOMÉ E PRÍNCIPE



Db 1500

S. TOMÉ E PRÍNCIPE



Db 1500

S. TOMÉ E PRÍNCIPE

CANZA 1996

S. TOMÉ E PRÍNCIPE

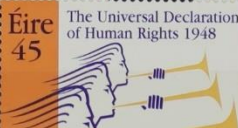


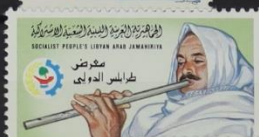
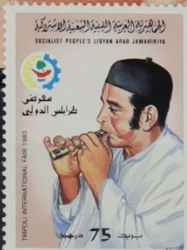
Db 1500

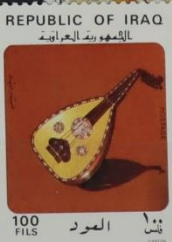
S. TOMÉ E PRÍNCIPE

TAROLA, TAMBOR E MUSSUMBA 1996

INSTRUMENTOS MUSICAIS





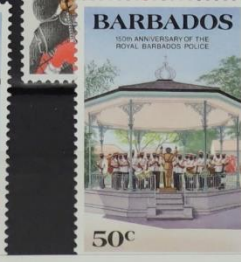
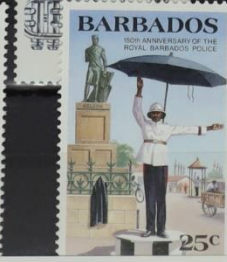




Le 8 Juillet 1985



Le 8 Juillet 1985





ສາທາລະນະລັດ ປະຊາທິປະໄຕ ປະຊາຊົນລາວ
 REPUBLIQUE DEMOCRATIQUE POPULAIRE LAO

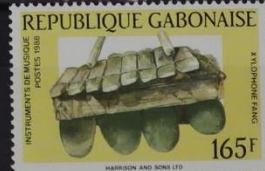
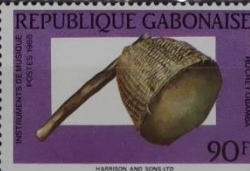


ປີ ສາກົນ ດັກນັ້ງ "ອັດ 2"

INTERNATIONALE DE L'ENFANT "DEUXIEME SE"



REPUBLIQUE GABONAISE







BHUTAN
THEMATIC ISSUE
**RELIGIOUS
MUSICAL INSTRUMENTS**



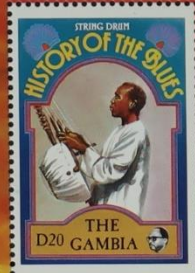
Issued by
the Posts & Telegraphs Department
of the Royal Government of Bhutan

BHUTAN
THEMATIC ISSUE
**RELIGIOUS
MUSICAL INSTRUMENTS**

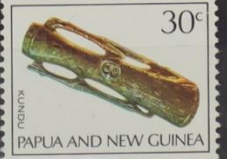


Issued by
the Posts & Telegraphs Department
of the Royal Government of Bhutan





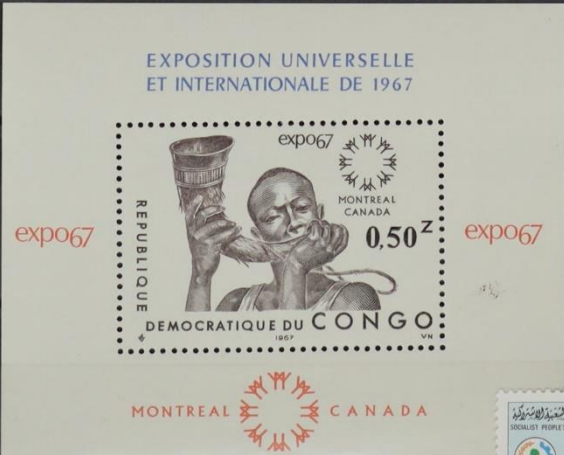






TRANH DÂN GIẢN VIỆT-NAM









**LUÍS A. DEL PARANÁ
Y LOS PARAGUAYOS
"GALOPERA"**

EMISION N°10 DEC. 8.387/85



0580





Van dit kavel is een deel gefotografeerd.

Part of this lot has been photographed.

Ein Teil dieses Loses wurde fotografiert.

Une partie de ce lot a été photographiée.

Часть этого лота сбита.

该拍品的一部分已被拍摄。

このロットの一部が撮影されました。